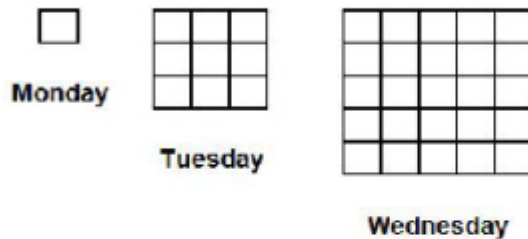


P3.1

Literature Connections

Literature Connections -*The Quiltmaker's Gift* by Jeff Brumbeau, provides opportunities to engage students in exploring geometric patterns and principles in a real-world context of quilting. After reading the book students can work on the following jean quilt problem:

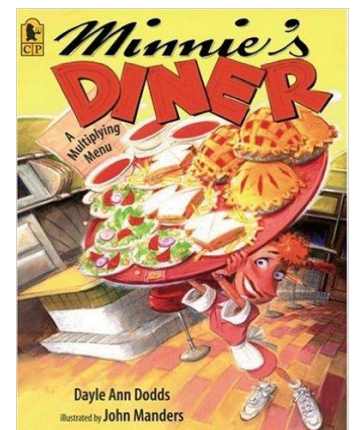
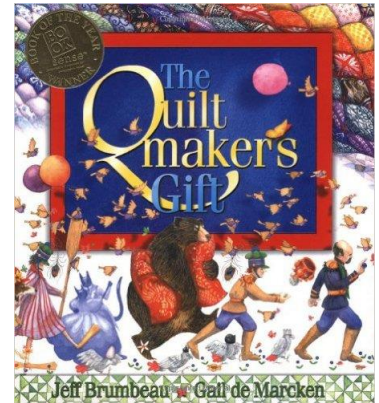
Sarah is making a jean quilt with blocks. She adds a border each day as seen below (you may use a T-chart to help you).



Draw the pattern she will make on Thursday. How many blocks will she have to add on Friday? On what day will she have added 48 blocks?

Another literature connection is, *Minnie's Diner* by Dayle Dodds. After reading and discussing the book, ask: If each special cost \$4.00, how much money did it cost each brother? How much did it cost for the whole McFay family? Complete a T-chart to find your answers.

Number of Specials	Cost
Will - 1 Special	\$4.00
Bill - 2 Specials	\$8.00



From:

http://www.ed.gov.nl.ca/edu/k12/curriculum/guides/mathematics/primary/Unit_1_Patterning.pdf